

200 nm



Mag = 40.00 K X

EHT = 5.00 kV

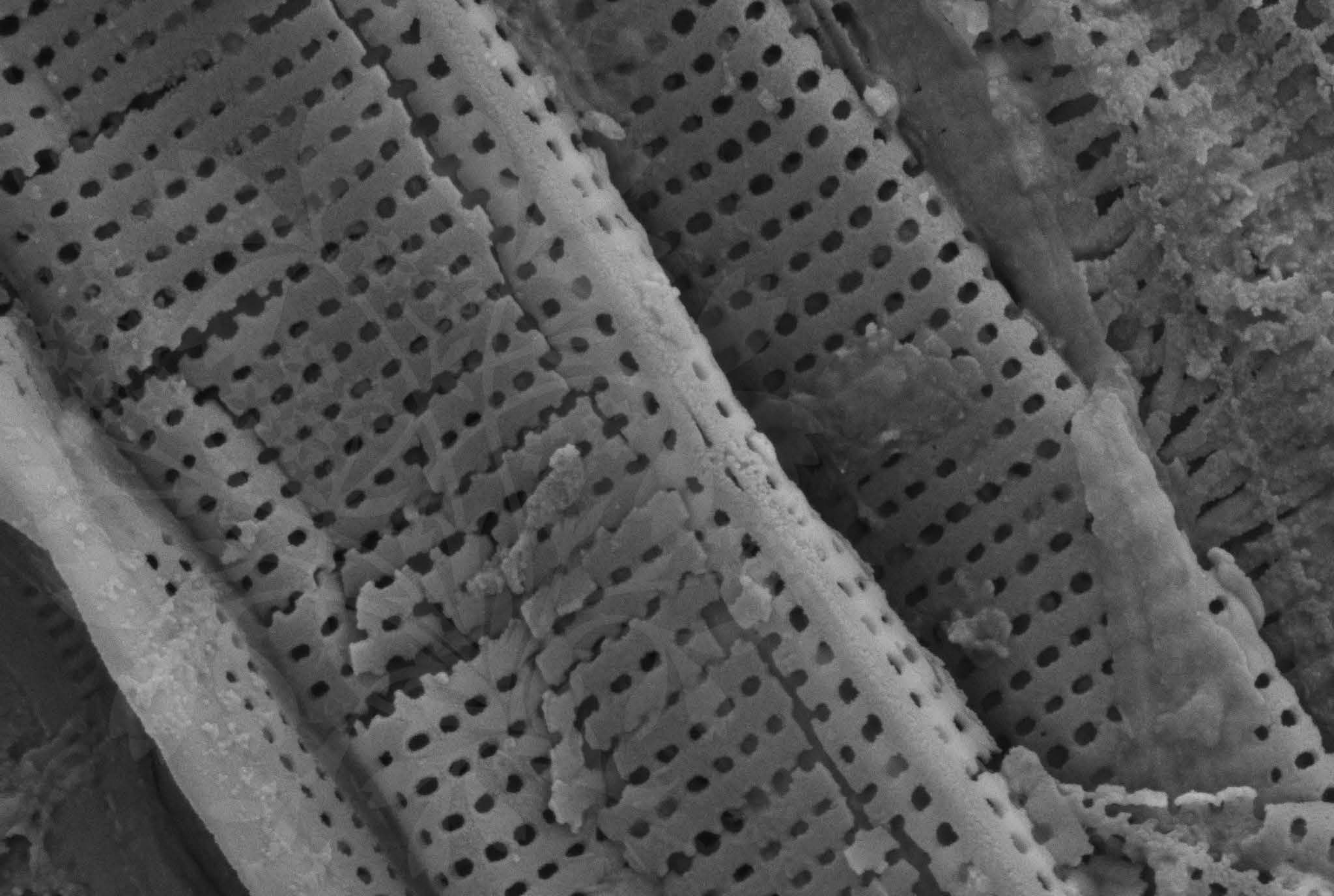
Signal A = SE2 Date :7 Feb 2017

WD = 4.1 mm

File Name = BC0806\_01.tif







200 nm



Mag = 40.00 K X

EHT = 5.00 kV

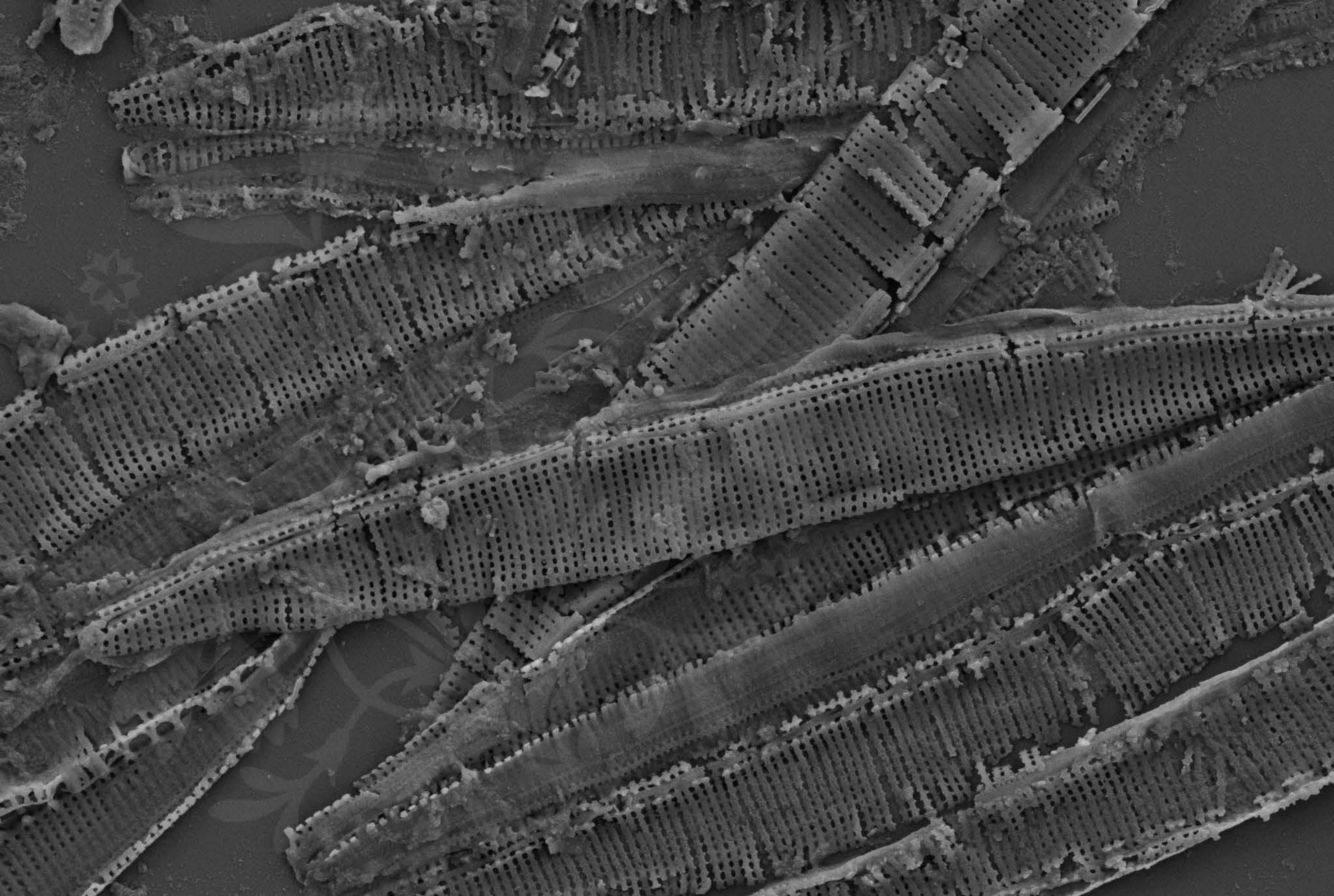
Signal A = SE2 Date :7 Feb 2017

WD = 4.2 mm

File Name = BC0806\_02.tif







1  $\mu\text{m}$   
└──┘

Mag = 10.00 K X

EHT = 5.00 kV

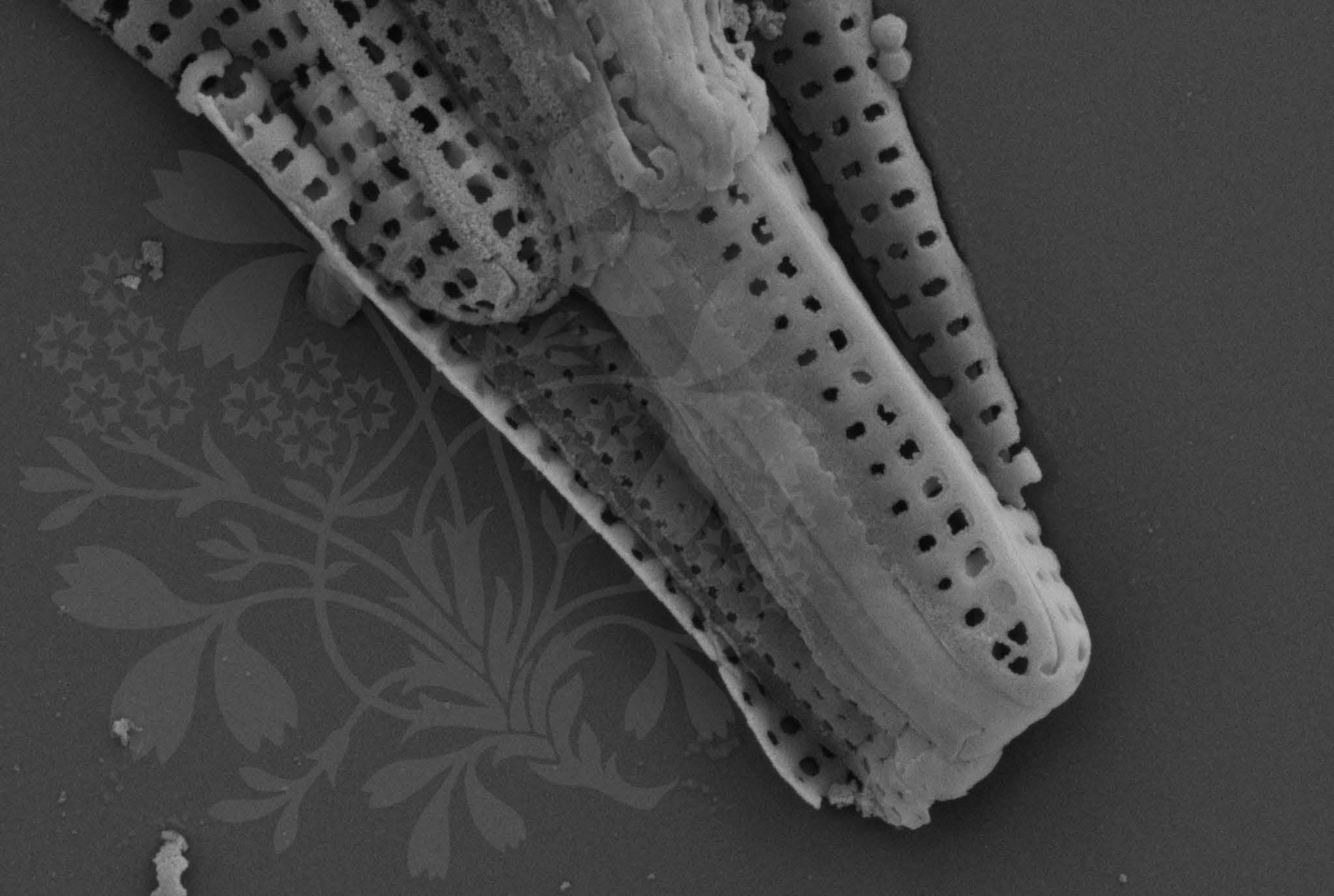
Signal A = SE2 Date :7 Feb 2017

WD = 4.2 mm

File Name = BC0806\_03.tif







200 nm



Mag = 40.00 K X

EHT = 5.00 kV

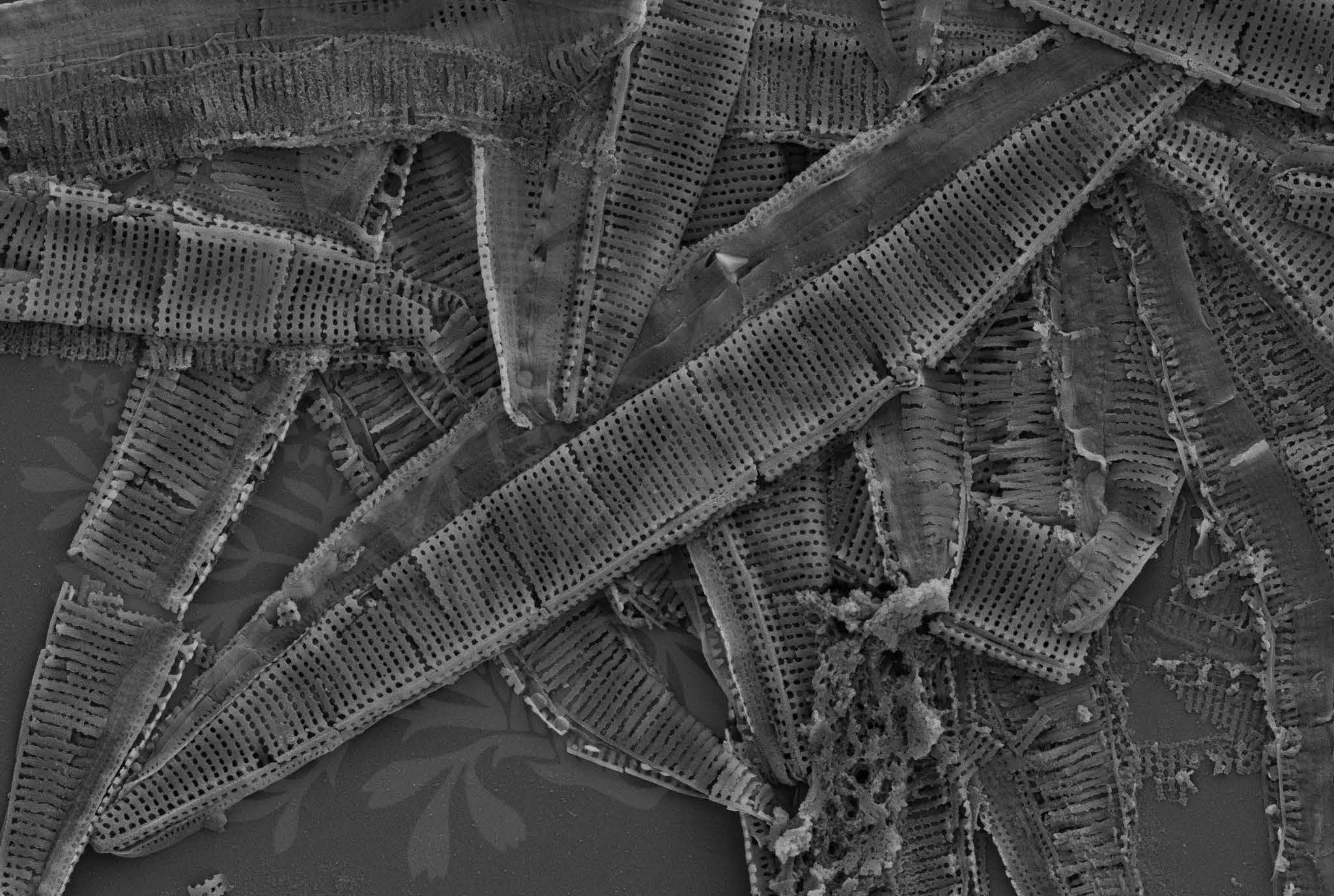
Signal A = SE2 Date :7 Feb 2017

WD = 4.2 mm

File Name = BC0806\_04.tif







1  $\mu\text{m}$   
┌  
└

Mag = 10.00 K X

EHT = 5.00 kV

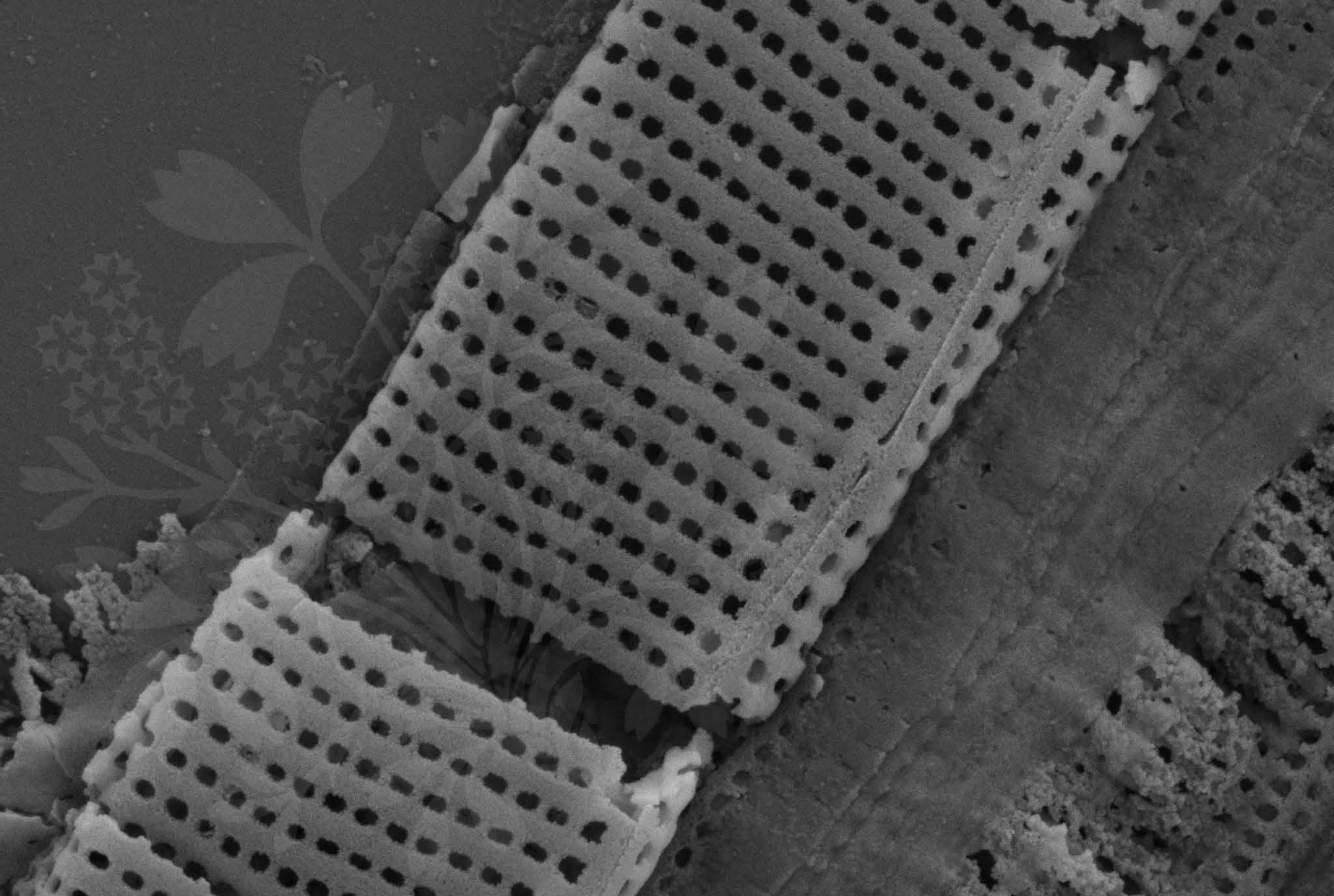
Signal A = SE2 Date :7 Feb 2017

WD = 4.2 mm

File Name = BC0806\_05.tif







200 nm



Mag = 40.00 K X

EHT = 5.00 kV

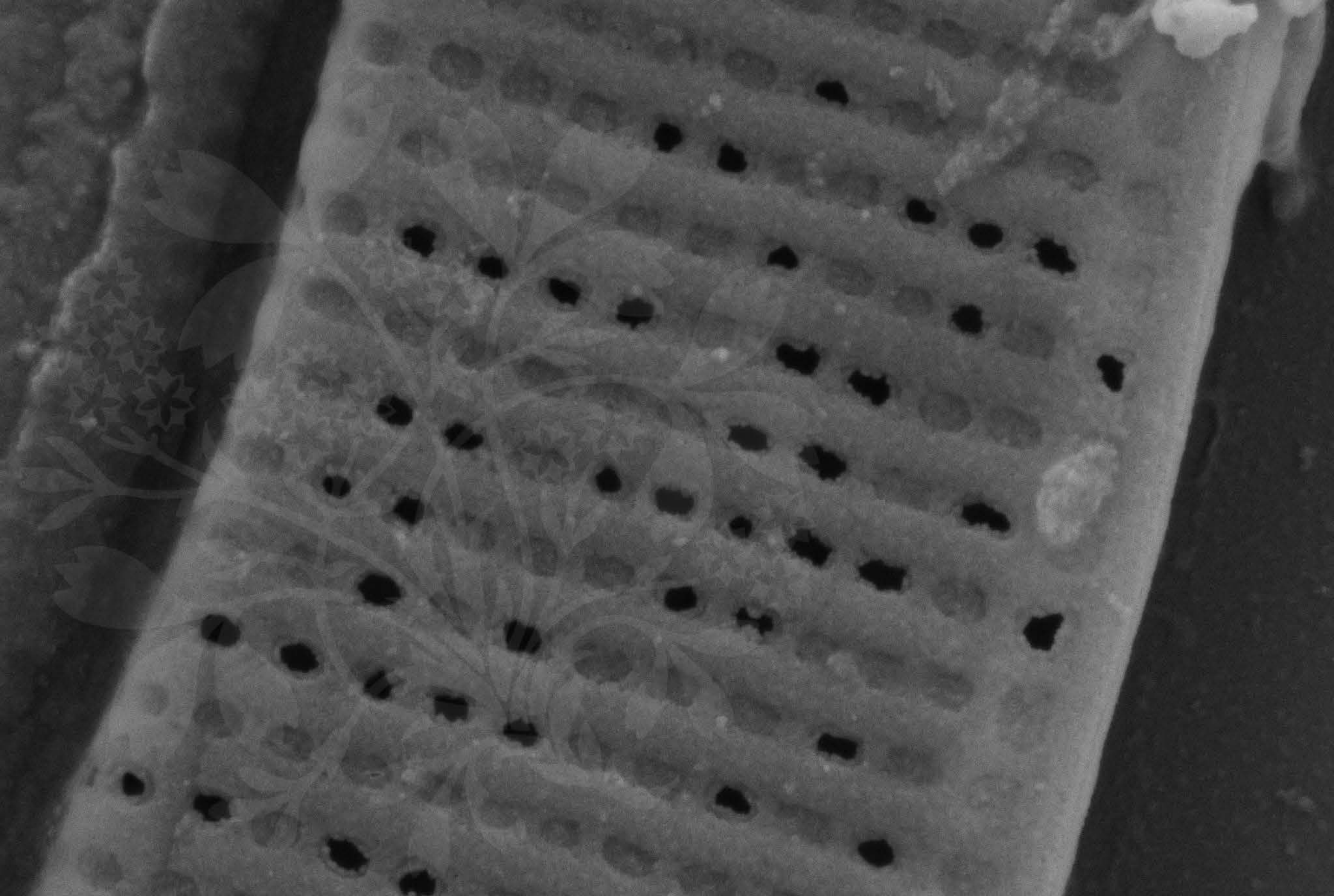
Signal A = SE2 Date :7 Feb 2017

WD = 4.2 mm

File Name = BC0806\_06.tif







100 nm



Mag = 80.00 K X

EHT = 5.00 kV

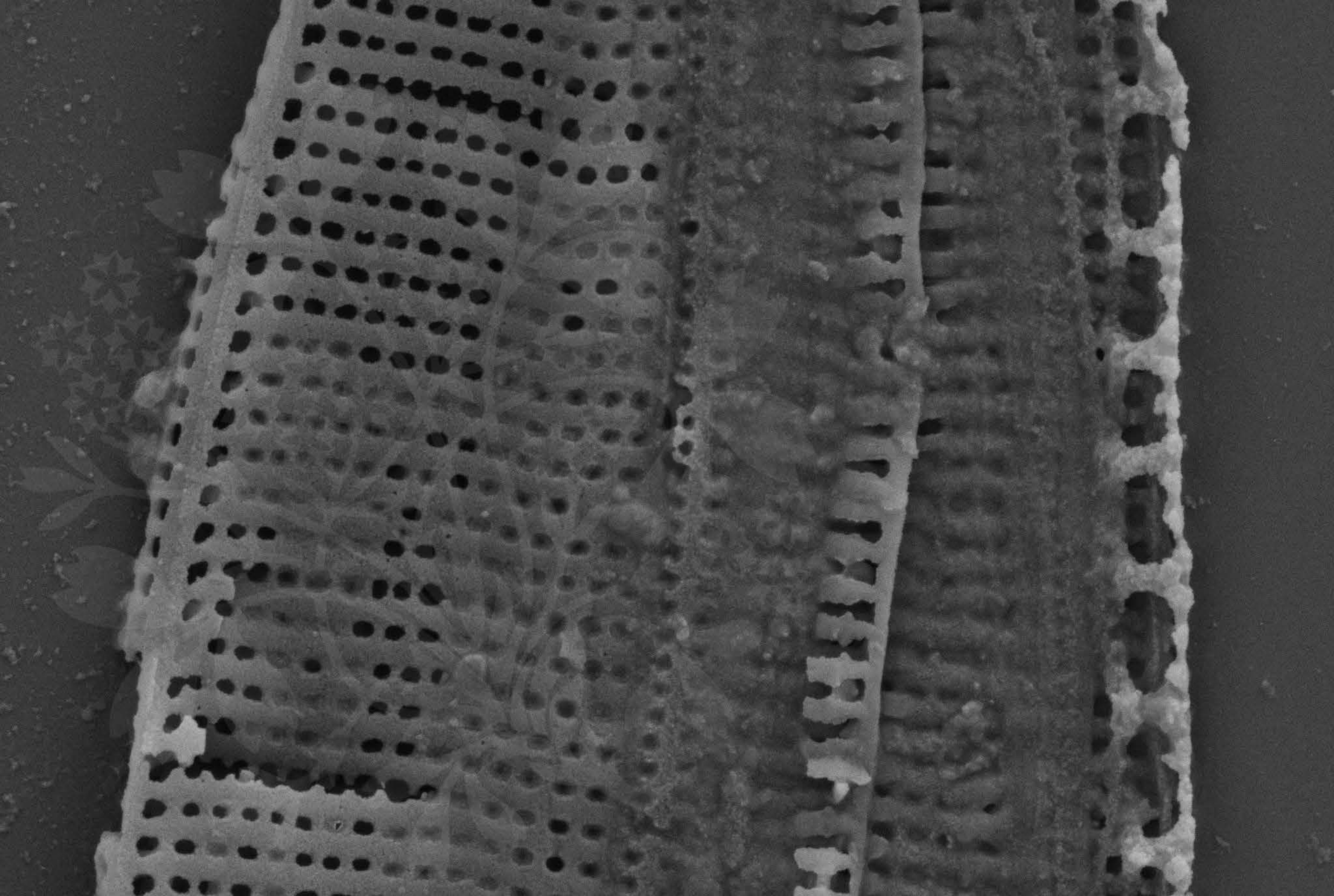
Signal A = SE2 Date :7 Feb 2017

WD = 4.1 mm

File Name = BC0806\_07.tif







200 nm



Mag = 35.00 K X

EHT = 5.00 kV

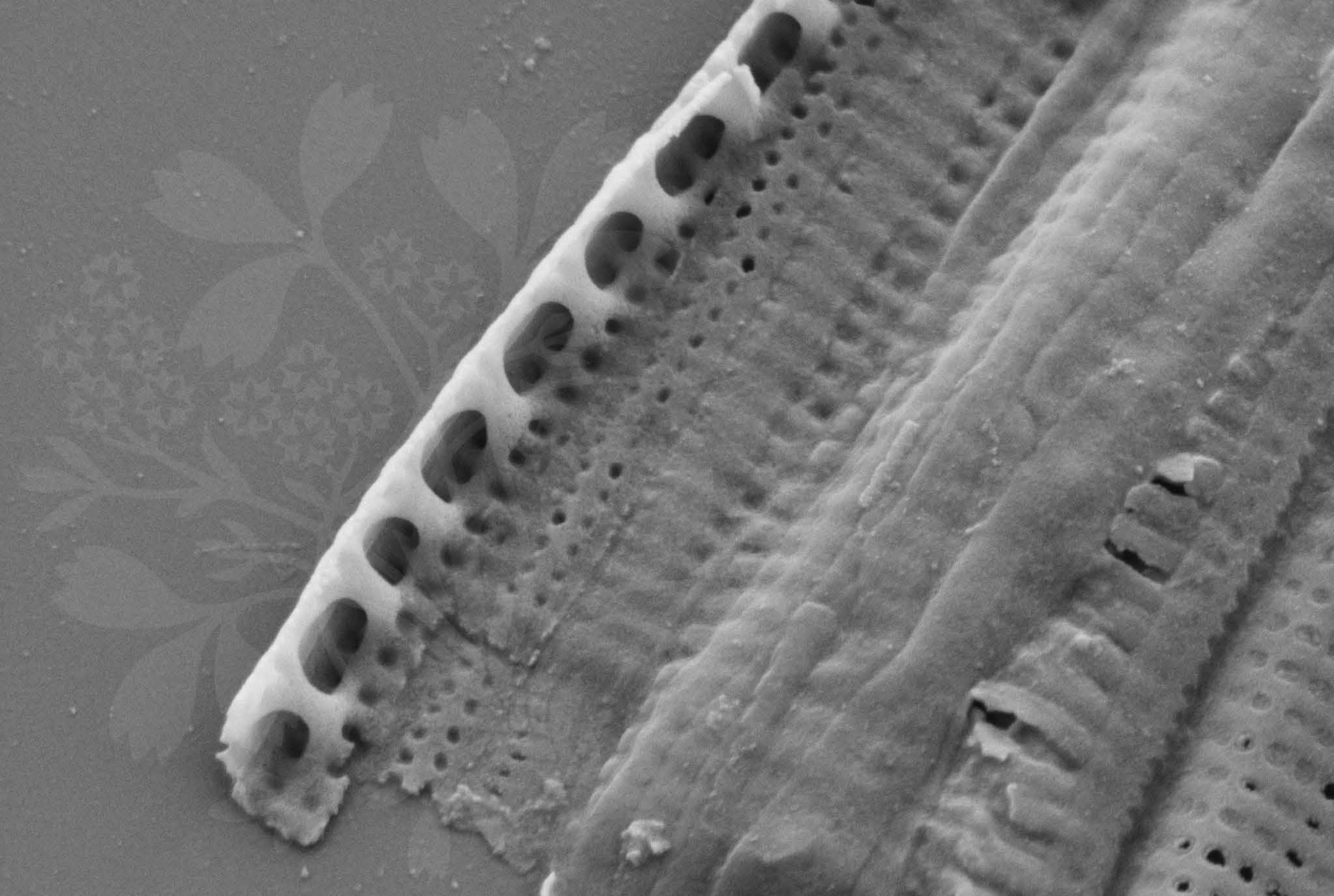
Signal A = SE2 Date :7 Feb 2017

WD = 4.2 mm

File Name = BC0806\_08.tif







200 nm  
┌───┐

Mag = 40.00 K X

EHT = 5.00 kV

Signal A = SE2 Date :7 Feb 2017

WD = 4.1 mm

File Name = BC0806\_09.tif

